

MEDIA CONVERTER TECHNICAL SPECIFICATIONS

| | |
|------------------------|--|
| Standards | 802.3, 100BASE-SX PMD |
| Case dimensions | 4.75" x 3.0" x 1.0" (119mm x 76mm x 25mm) |
| Shipping Weight | 2 pounds (0.9 kilograms) |
| Environment | Temperature: 0-40°C (32° to 104° F) Humidity 10-90%, non condensing Altitude 0-10,000 feet |
| Warranty | Lifetime |

Power Supply Requirements Replace power supply with only the equivalent input rating (see below) and output rating (regulated 9VDC at 700 mA).

| TN PN | Requirement | Location |
|-------|------------------------|-------------------|
| 3525 | 240 volts, 50 hertz | United Kingdom |
| 3525 | 230 volts, 50 hertz | Europe |
| 3518 | 120 volts, 60 hertz | USA/Canada/Mexico |
| 3514 | 100 volts, 50-60 hertz | Japan |
| 3525 | 240 volts, 50 hertz | Australia |

NOTE: This product also can be powered by the Transition Networks E-MCR series media converter rack.



CAUTION: RJ connectors are NOT INTENDED FOR CONNECTION TO THE PUBLIC TELEPHONE NETWORK. Failure to observe this caution could result in damage to the public telephone network.

Der Anschluss dieses Gerätes an ein öffentliches Telekommunikationsnetz in den EG-Mitgliedstaaten verstößt gegen die jeweiligen einzelstaatlichen Gesetze zur Anwendung der Richtlinie 91/263/EWG zur Angleichung der Rechtsvorschriften der Mitgliedstaaten über Telekommunikationsendeinrichtungen einschliesslich der gegenseitigen Anerkennung ihrer Konformität.

Compliance Information

UL Listed
C-UL Listed (Canada)
CISPR/EN55022 Class A

FCC Regulations

This equipment has been tested and found to comply with the limits for a class A digital device, pursuant to part 15 of the FCC rules. These limits are designed to provide reasonable protection against harmful interference when the equipment is operated in a commercial environment. This equipment generates, uses, and can radiate radio frequency energy and, if not installed and used in accordance with the instruction manual, may cause harmful interference to radio communications. Operation of this equipment in a residential area is likely to cause harmful interference, in which case the user will be required to correct the interference at the user's own expense.

Canadian Regulations

This digital apparatus does not exceed the Class A limits for radio noise for digital apparatus set out on the radio interference regulations of the Canadian Department of Communications.

European Regulations

Warning

This is a Class A product. In a domestic environment this product may cause radio interference in which case the user may be required to take adequate measures.

Copyright Restrictions

© 1999 TRANSITION Networks.

All rights reserved. No part of this work may be reproduced or used in any form or by any means – graphic, electronic, or mechanical – without written permission from TRANSITION Networks.

Trademark Notice

All registered trademarks and trademarks are the property of their respective owners.

33103.B



Minneapolis, MN 55344 USA

10BASE-T/100BASE-TX to 100BASE-SX

Bridging Media Converter

E-PSW-SX-01, E-PSW-SX-01(SC)

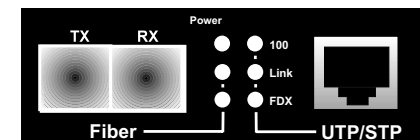
USER'S GUIDE

TRANSITION Networks E-PSW-SX-01 series two-port bridging media converter segments 10BASE-T/100BASE-TX copper and 100BASE-SX fiber Ethernet™ collision domains to extend total network diameter, to reduce network congestion, and to convert between legacy 10BASE-T and 100BASE-SX environments.

A four-position DIP switch located at the side of the media converter allows site-selection of auto-negotiation, of 10MB/s or 100Mb/s speed, and of full-duplex or half-duplex mode.

E-PSW-SX-01

Provides an RJ-45 twisted-pair connector to UTP/STP copper cable and a set of RX (receive) and TX (transmit) ST 850nm multimode fiber connectors.



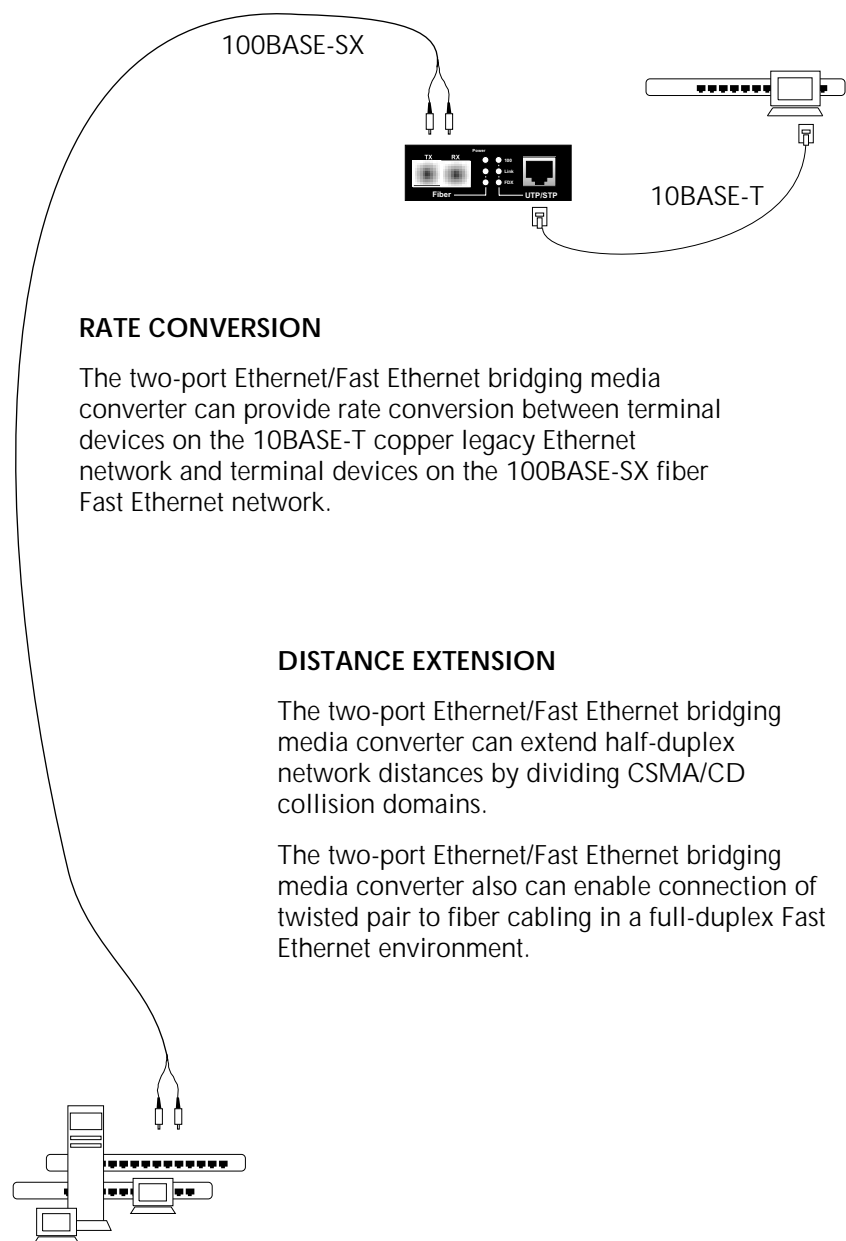
E-PSW-SX-01(SC)

Provides an RJ-45 twisted-pair connector to UTP/STP copper cable and an RX (receive) and TX (transmit) SC 850nm multimode fiber connector.

STATUS LEDs

- Power** Steady green LED indicates connection to external AC power.
- 100** Indicates 100MB/s speed on UTP/STP.
- Link** (RECEIVE) Steady green LED indicates UTP/STP OR Fiber link. Blinking green LED indicates packet reception on UTP/STP OR Fiber link.
- FDX** Steady green LED indicates full-duplex operation on UTP/STP OR on Fiber link.

THE E-PSW-SX-01 IN THE NETWORK



RATE CONVERSION

The two-port Ethernet/Fast Ethernet bridging media converter can provide rate conversion between terminal devices on the 10BASE-T copper legacy Ethernet network and terminal devices on the 100BASE-SX fiber Fast Ethernet network.

DISTANCE EXTENSION

The two-port Ethernet/Fast Ethernet bridging media converter can extend half-duplex network distances by dividing CSMA/CD collision domains.

The two-port Ethernet/Fast Ethernet bridging media converter also can enable connection of twisted pair to fiber cabling in a full-duplex Fast Ethernet environment.

ETHERNET CABLE SPECIFICATIONS

FIBER CABLE SPECIFICATIONS

The physical characteristics of the 100BASE-SX cable must meet or exceed the 100BASE-SX specifications.

100BASE-SX Cable Specifications

MULTIMODE

| | |
|-----------------------------------|------------------------------------|
| Fiber-optic Cable Recommended: | 62.5 / 125 μ m multimode fiber |
| Optional: | 50 / 125 μ m multimode fiber |
| Modal bandwidth: | \leq 160MHz-Km |
| Fiber-optic Transmitter Power: | min: -20 dBm max: -12 dBm |
| Fiber-optic Receiver Sensitivity: | min: -24 dBm max: -12 dBm |
| Wavelength: | 850nm |
| Bit error rate: | $\leq 2.5 \cdot 10^{-10}$ |
| Maximum Cable Distance: | 300 meters |

TWISTED-PAIR CABLE SPECIFICATIONS

The physical characteristics of **10BASE-T** cable must meet or exceed IEEE 802.3 10BASE-T specifications. Though **Category 3 cable is adequate** for the 10BASE-T installation, Category 5 cable is strongly recommended, since Category 3 cable can NOT be used for a later upgrade to 100BASE-TX. **DO NOT USE FLAT OR SILVER SATIN WIRE.**

The physical characteristics of **100BASE-TX** cable must meet or exceed IEEE 802.3 100BASE-TX specifications. **Category 5 cable or better is required.** Either shielded twisted pair (STP) or unshielded twisted pair (UTP) can be used. **DO NOT USE FLAT OR SILVER SATIN WIRE.**

Category 3:

| | |
|---------------------------------------|------------------------|
| Gauge | 24 to 22 AWG |
| Attenuation | 6.5 dB/100' @ 10 MHz |
| Differential Characteristic Impedance | 100 Ω \pm 15% |

Category 5:

| | |
|---------------------------------------|------------------------|
| Gauge | 24 to 22 AWG |
| Attenuation | 22 dB/100' @ 100 MHz |
| Differential Characteristic Impedance | 100 Ω \pm 15% |

Maximum Cable Distance:

100 meters (330 feet)

TROUBLESHOOTING SUGGESTIONS

If a bridging media converter fails, ask the following questions:

1. Is the power LED on the media converter illuminated?

NO

- Is the power adapter the proper type of voltage and cycle frequency for the AC outlet?
- Is the power adapter properly installed in the media converter and in the outlet?
- Contact Technical Support.

YES

- Proceed to step 2.

2. Is the Link LED illuminated on a port with twisted-pair installed?

NO

- Check UTP cables for proper connection/pin assignment.
- Contact Technical Support.

YES

- Proceed to step 3.

3. Is the Link LED illuminated on a port with fiber installed?

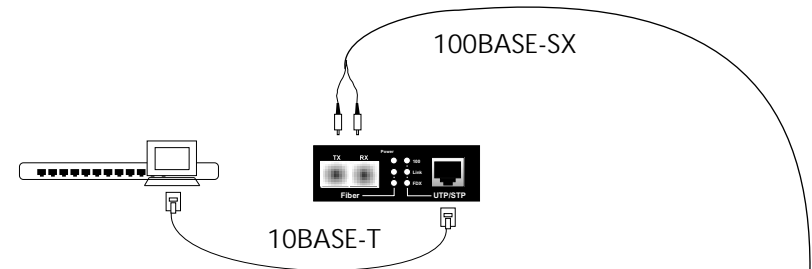
NO

- Check fiber cables for proper connection.
- Verify that TX and RX cables are connected to RX and TX ports, respectively, on 100BASE-SX device.
- Refer to Tech Tips available at: <http://www.transition.com>
- Contact Technical Support.

YES

- Contact Technical Support.

(800) 260-1312/(800)-LAN-WANS

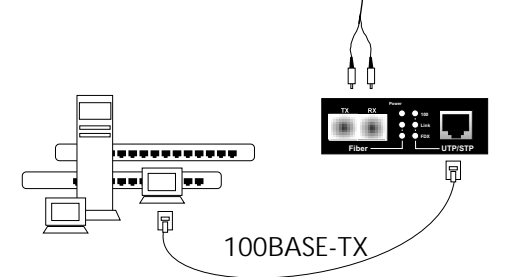


CONGESTION REDUCTION

The two-port Ethernet/Fast Ethernet bridging media converter can reduce congestion by segmenting network traffic.

The bridging media converter does not forward collision signals or error packets from one CSMA/CD collision domain to another, improving baseline network performance.

And the bridging media converter filters packets destined for local devices, also reducing network congestion.

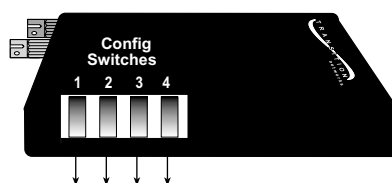


INSTALLATION

NOTE: Ensure that the installation location is well-ventilated and near a standard AC electrical outlet.

Setting DIP Switch

DIP switch settings shown below are set to configure the bridging media converter for the site installation:



| | |
|--|--|
| | Twisted-pair Auto-negotiation ON |
| | Twisted-pair Auto-negotiation OFF |
| | Twisted-pair FULL-DUPLEX |
| | Twisted-pair HALF-DUPLEX |
| | Twisted-pair 100BASE-TX |
| | Twisted-pair 10BASE-T |
| | Fiber FULL-DUPLEX |
| | Fiber HALF-DUPLEX |

To set network speed(s) and operating mode(s), use a VERY small flatblade screwdriver or similar device and refer to the table at the left and to the examples on the next page to set DIP switch for the site installation.

NOTE: Auto-negotiation is designed so that a twisted-pair link will not become operational until matching capabilities exist in the devices installed at both ends of the 802.3u twisted-pair network.

- When auto-negotiation is enabled using switch #1, the bridging media converter “advertises” rate and mode capabilities to the network. Switch #2 and switch #3 are used selectively to set the twisted-pair rate and mode to be “advertised” OR to allow the full range of rates and modes.
- When auto-negotiation is disabled using switch #1, the bridging media converter does not “advertise” rate and mode capabilities to the network. Switch #2 and switch #3 are used to set twisted-pair rate and mode.

Connecting Fiber Cable to TX/RX Connector (100BASE-SX)

100BASE-SX AND THE FAST ETHERNET COLLISION DOMAIN

- Refer to the 512-Bit Rule (page 7) before installing **half-duplex** 100BASE-SX cable.
- Using **full-duplex** fiber cable avoids collision domain considerations and extends distances up to 300 meters.
- NOTE: A Fast Ethernet collision domain can have **ONLY ONE** CLASS I repeater OR **TWO** CLASS II repeaters.

INSTALLING CABLE

To install 100BASE-SX cable:

- Locate or build 100BASE-SX cables:
 - 100BASE-SX compliant (page 11)
 - with male transmit (TX) and receive (RX) fiber connectors installed at both cable ends.
- Connect transmit cable connector at one end of fiber cable to bridging media converter connector marked with an “outbound” arrow; connect receive cable connector to bridging media converter connector marked with an “inbound” arrow.
- Connect other end of cable installed at transmit (TX) connector of bridging media converter to receive (RX) connector on network device; connect other end of cable installed at receive (RX) connector of bridging media converter to transmit (TX) connector on network device.

Powering the Bridging Media Converter

To power ON the bridging media converter:

- Locate power receptacle on back of bridging media converter
- Connect the bridging media converter power connector end of the power supply adapter to the power receptacle on the back of the Transition Network’s bridging media converter.
- Connect the external power connector end of the power supply adapter to external AC power.

NOTE: After the power supply adapter is connected to the bridging media converter and to external power, the green **Power** LED is illuminated.

Connecting Twisted-Pair Copper Cable to UTP/STP Connector (10BASE-T/100BASE-TX)

Ensure that the correct cable type is installed to support the highest speed and mode of operation to be selected. Though Category 3 cable is adequate for the 10BASE-T installation, Category 5 cable is strongly recommended, since Category 3 cable can NOT be used for 100BASE-TX.

10BASE-T AND THE ETHERNET COLLISION DOMAIN

- Refer to the 5-Segment Rule (page 6) before installing **half-duplex** 10BASE-T cable.
- Installing **full-duplex** twisted-pair cable avoids collision domain considerations; distances remain ≤ 100 meters.

100BASE-TX AND THE FAST ETHERNET COLLISION DOMAIN

- Refer to the 512-Bit Rule (page 7) before installing **half-duplex** 100BASE-TX cable.
- Installing **full-duplex** twisted-pair cable avoids collision domain considerations; distances remain ≤ 100 meters.
- NOTE: A Fast Ethernet collision domain can have **ONLY ONE** CLASS I repeater **OR TWO** CLASS II repeaters.

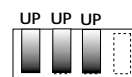
INSTALLING CABLE

To install 10BASE-T or 100BASE-TX cable:

- Locate or build 10BASE-T or 100BASE-TX cables:
 - 803.2 (10BASE-T) or 803.2u (100BASE-TX) compliant (page 11)
 - with *Straight-through* or *Crossover* RJ-45 cable/connectors as required for site installation (page 7)
 - with RJ-45 plug connectors installed at both cable ends.
- Connect RJ-45 plug connector at one end of 10BASE-T or 100BASE-TX cable to bridging media converter RJ-45 jack connector.
- Connect RJ-45 plug connector at other end of 10BASE-T or 100BASE-TX cable to RJ-45 jack connector on network device.

EXAMPLE DIP SWITCH SETTINGS:

TWISTED-PAIR AUTO-NEGOTIATION:

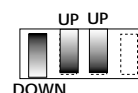


Set auto-negotiation (DIP switch #1) to select auto-negotiation: ON=UP

Set twisted-pair full-duplex/half-duplex (DIP switch #2) to select full-duplex: ON=UP

Set twisted-pair 10BASE-T/100BASE-TX (DIP switch #3) to select 100BASE-TX: ON=UP

TWISTED-PAIR FULL-DUPLEX 100BASE-TX:

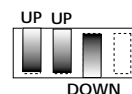


Set auto-negotiation (DIP switch #1) to de-select auto-negotiation: OFF=DOWN

Set twisted-pair full-duplex/half-duplex (DIP switch #2) to select full-duplex: ON=UP

Set twisted-pair 10BASE-T/100BASE-TX (DIP switch #3) to select 100BASE-TX: ON=UP

TWISTED-PAIR 10BASE-T WITH MODE AUTO-NEGOTIATION:



Set auto-negotiation (DIP switch #1) to select auto-negotiation: ON=UP

Set twisted-pair full-duplex/half-duplex (DIP switch #2) to select full-duplex: ON=UP

Set twisted-pair 10BASE-T/100BASE-TX (DIP switch #3) to select 10BASE-T: OFF=DOWN

FIBER FULL-DUPLEX 100BASE-SX:



Set fiber full-duplex/half-duplex (DIP switch #4) to select full-duplex: ON=UP

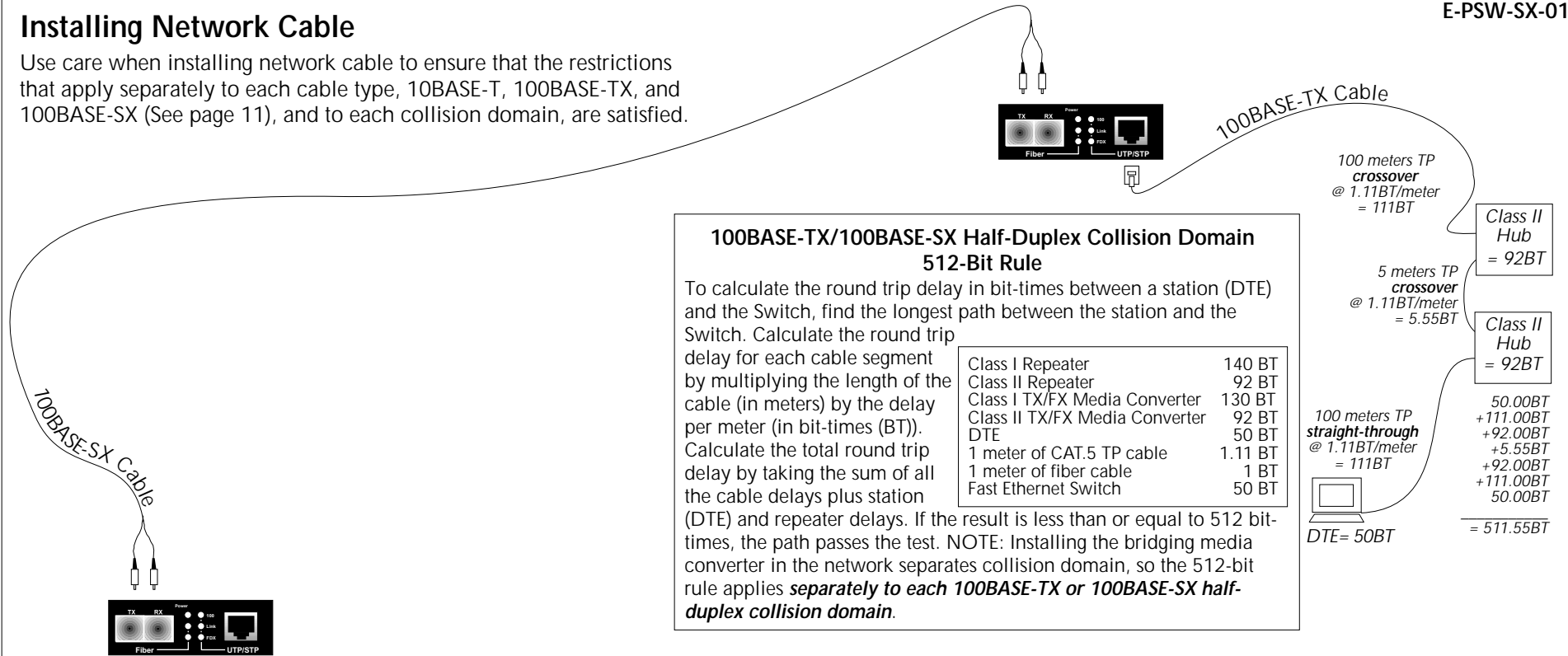
FIBER HALF-DUPLEX 100BASE-SX:



Set fiber full-duplex/half-duplex (DIP switch #4) to select half-duplex: OFF=DOWN

Installing Network Cable

Use care when installing network cable to ensure that the restrictions that apply separately to each cable type, 10BASE-T, 100BASE-TX, and 100BASE-SX (See page 11), and to each collision domain, are satisfied.



100BASE-TX/100BASE-SX Half-Duplex Collision Domain 512-Bit Rule

To calculate the round trip delay in bit-times between a station (DTE) and the Switch, find the longest path between the station and the Switch. Calculate the round trip delay for each cable segment by multiplying the length of the cable (in meters) by the delay per meter (in bit-times (BT)). Calculate the total round trip delay by taking the sum of all the cable delays plus station (DTE) and repeater delays. If the result is less than or equal to 512 bit-times, the path passes the test. NOTE: Installing the bridging media converter in the network separates collision domain, so the 512-bit rule applies *separately to each 100BASE-TX or 100BASE-SX half-duplex collision domain.*

| | |
|--------------------------------|---------|
| Class I Repeater | 140 BT |
| Class II Repeater | 92 BT |
| Class I TX/FX Media Converter | 130 BT |
| Class II TX/FX Media Converter | 92 BT |
| DTE | 50 BT |
| 1 meter of CAT.5 TP cable | 1.11 BT |
| 1 meter of fiber cable | 1 BT |
| Fast Ethernet Switch | 50 BT |

100 meters TP crossover @ 1.11BT/meter = 111BT

Class II Hub = 92BT

5 meters TP crossover @ 1.11BT/meter = 5.55BT

Class II Hub = 92BT

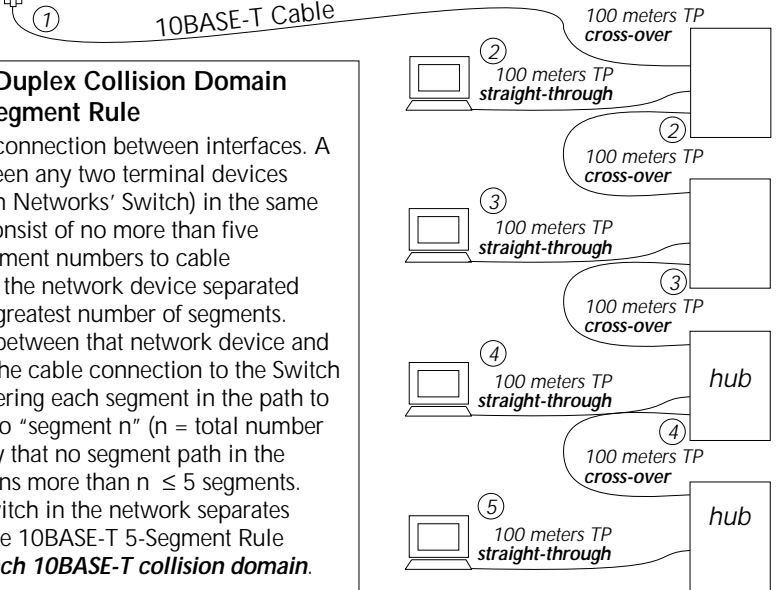
100 meters TP straight-through @ 1.11BT/meter = 111BT

DTE = 50BT

50.00BT + 111.00BT + 92.00BT + 5.55BT + 92.00BT + 111.00BT + 50.00BT = 511.55BT

10BASE-T Half-Duplex Collision Domain 5-Segment Rule

A segment is the cable connection between interfaces. A transmission path between any two terminal devices (including the Transition Networks' Switch) in the same collision domain can consist of no more than five segments. To assign segment numbers to cable connections, determine the network device separated from the Switch by the greatest number of segments. Define a segment path between that network device and the Switch by labeling the cable connection to the Switch "segment 1" and numbering each segment in the path to the network device up to "segment n" (n = total number of segments ≤ 5). Verify that no segment path in the collision domain contains more than n ≤ 5 segments. NOTE: Installing the Switch in the network separates collision domains, so the 10BASE-T 5-Segment Rule applies *separately to each 10BASE-T collision domain.*



Twisted-pair Copper Straight-Through /Crossover Configurations

The two active pairs in a 10BASE-T or 100BASE-TX network are pins 1 & 2 and pins 3 & 6. Use only dedicated wire pairs (such as blue/white & white/blue, orange/white & white/orange) for the active pairs.

The two wires in each pair of the cable must be twisted together for the entire length of the segment and kept twisted to within approximately 1/2 inch of any connector to ensure the integrity of the signal-carrying characteristics of the unshielded wire pair.

| Crossover Cable at RJ-45 Plug | | Straight-Through Cable at RJ-45 Plug | |
|-------------------------------------|---------------------------|--------------------------------------|---------------------------|
| Bridging Media Converter RJ-45 Male | Network Device RJ-45 Male | Bridging Media Converter RJ-45 Male | Network Device RJ-45 Male |
| 1 (TX+) | 3 | 1 (TX+) | 1 |
| 2 (TX-) | 6 | 2 (TX-) | 2 |
| 3 (RX+) | 1 | 3 (RX+) | 3 |
| 6 (RX-) | 2 | 6 (RX-) | 6 |

NOTE: Media converter is pinned as DTE device.